

UK-OSINT

www.uk-osint.net & www.ktrs.info

**Newsletter
January 2015**

So Why Are We Doing A Newsletter?

I thought we should start putting out a regular newsletter for those who have attended any of our multi-day courses over the last few years, so that we can keep you up-to-date with any advances & changes in the world of **Open Source INTElligence**.

We are aiming to produce and send out a newsletter every three months; If you would rather not receive this newsletter please just email us at info@uk-osint.com to let us know and we will remove you from the mailing list.

This edition is probably going to be a bit longer than the others as there is a lot to write about, from what we are doing with UCLAN & the ACIA to the changes at Facebook and the brilliant resource that is Echosec.

We further intend to include a section similar to the articles that we did for Police Oracle last year, going through the alphabet picking out some of the useful websites listed on the Favorites page of our website.

We will also have a "what's in" and "what's out" section highlighting changes to those listed in the Favorites page since the previous newsletter.

If there is anything else you would like covered or if you have any interesting articles you want included then then just email us at info@uk-osint.com.

site of the month

www.echosec.net

Echosec provides a location based search site for social media and other information.

You can read a review of the service on page 3 and find

Echsec on Twitter at

[@echosec_uk](https://twitter.com/echosec_uk) &

[@echosec_search](https://twitter.com/echosec_search)



echosec.



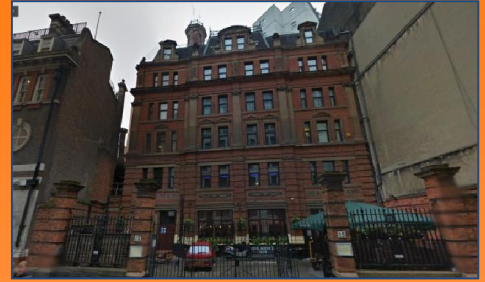
The photo is of me giving a presentation at the Annual Conference of Health Insurance Counter Fraud Group (www.hicfg.com) in October 2014.

If you would like to invite us to speak at your event, company or organization, please get in touch and email us at info@uk-osint.com.

Upcoming Courses & Presentations

After holding out last open course at the Civil Service Club (www.civilserviceclub.org.uk) in London during November last year, and finding it a very nice and conveniently placed venue, we have decided to run the course there again.

I know if you are in Scotland, Wales or even the North of England then London is not very convenient to get to but if you want us to do a course in your area then ask around your colleagues as if you can get at least 6 people signed up for a course we will do one for you in your area.



Our next open course at the Civil Service Club in London will take place over 4 days from the 16th - 19th of March 2015. If any of your colleagues are interested in attending please get them to email us at info@uk-osint.com for full details.



We have also signed up with The Investigator Magazine (www.the-investigator.co.uk) to give some more presentations on OSINT in the spring of 2015. The details will be advertised on their website in a few weeks and no doubt I will be tweeting about them when the dates are finalised.

Association of Crime & Intelligence Analysts

From the start of 2015 those who successfully pass any of our multi-day courses and who are eligible, will be put forward for enrolment into the Association of Crime & Intelligence Analysts (www.acia.org.uk) with the initial annual membership fee being met from their course fee.

This will be open to people involved in crime investigation & research who are resident in the UK & Ireland but will not include those acting primarily as private investigators or journalists.



ECHOSEC

Providing Location Based Search For Social Media And Other Information

A few years ago we loved the Twitter app on the Bing map to show the location of Twitter messages posted over the last 30 days but sadly this feature disappeared ages ago.

Then a new firm favourite was "where-when" showing the location of photos uploaded to sites such as Instagram & Flickr. But sadly in the autumn of last year this also disappeared.



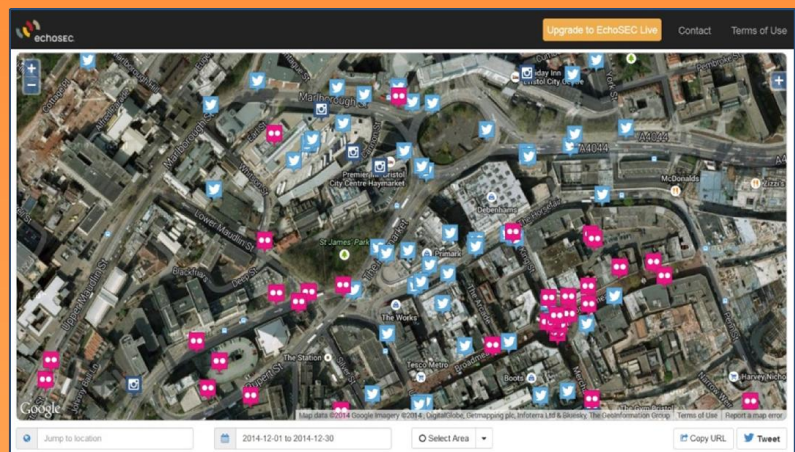
But fear not as we now have Echosec (www.echosec.net) a very useful mapping site, showing the locations of geotagged posting to a number of different social networking sites, including Twitter, Instagram, Flickr, YouTube and a few others.

I recently met up with Ben & Alex (@echosec_uk), the two UK representatives of Echosec at their offices in Newport. They showed me the full version of Echosec and told me about a few of the developments planned for the future.

So if you haven't tried it you really should, especially as there is a free version, giving you lots of useful information.

Visit www.echosec.net and click on "Explore For Free" and set the map to the location you are interested in. Then from the drop down boxes below the map you can choose a date range and "Select Area", using your mouse highlight a circle or rectangle on the area of the map you are interested in.

As soon as the area is highlighted then the locations and postings will start to be visible.



Those of you that already have access to Geofeedia who like to have a few more tools and access to public Facebook postings, remember you are paying for Geofeedia and this is just the free version of Echosec. The paid for version has many more useful tools and you may even get your public Facebook postings.

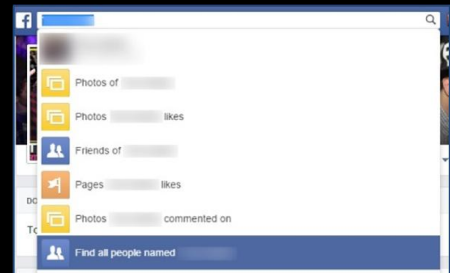
If anything this is the great attraction of Echosec, as everyone in an organisation can use the free version of it and get a lot of useful information from it. Then if they move to a specialist role, in a department where there is a budget to pay for the extra functions, they can then start using the paid for version straight away as they are already used to using the site and so there will be no great delay learning how to use it.

facebook

Last month saw a lot of changes to the Facebook Graph Search and they seem to have done away with the really useful drop down menu showing photos of, by, liked by etc. This was especially annoying as it happened overnight just before I was going to demonstrate it during a course.

With the help of Henk van Ess

(<https://www.rebelmouse.com/henkvaness/>) I have put a few new links on the Favorites page, where you can access 12 different useful pages, such as "photos liked by your subject", "photos commented on by your subject" "places visited by your subject" "places liked by your subject" and a few others.



Use the below to access the recently deactivated Facebook Graph Search's, just replace the FacebookIDNumber in the address bar with the subjects actual Facebook ID Number

(FS) www.facebook.com - photos of your subject
(FS) www.facebook.com - photos by your subject
(FS) www.facebook.com - photos liked by your subject
(FS) www.facebook.com - users whose uploaded photos liked by your subject
(FS) www.facebook.com - photos commented on by your subject
(FS) www.facebook.com - users who uploaded photos commented on by your subject
(FS) www.facebook.com - pages liked by your subject
(FS) www.facebook.com - places checked-in by your subject
(FS) www.facebook.com - places visited by your subject
(FS) www.facebook.com - places liked by your subject
(FS) www.facebook.com - current employers of your subject
(FS) www.facebook.com - other employees of where the subject works
(FS) www.facebook.com - friends of friends of your subject

or you can open up all of these pages with one Click but you still need to add your subjects Facebook ID Number to that section in the address bar

You just have to locate the subject's Facebook ID Number and then add that to the appropriate places in the address bar to activate these pages but when you do there is still lots of information you can find about someone, even if they have a fairly secure and locked down Facebook account.

The University of Central Lancashire (UCLan)



Last month saw the first of our 5 day OSINT courses for UCLAN (www.uclan.ac.uk) as a Module on their Cybercrime Investigations MSC.

Hopefully this year it will also be available as a standalone course through the University and we are also working on a distance learning course with them.

GB Group

The people at the GB Group (www.gbgrp.com) have introduced a new database, ConnexusIQ & Connexus.

It has a clean input / search page and as well as being able to search against UK addresses & nearly 55 million names; you can also search against 74 million email addresses, 100 million landline telephone numbers & 33 million mobile numbers.

It is an essential tool if you are tracing & researching people in the UK.



The screenshot displays the GB Group search interface. At the top, there are tabs for 'Name / DoB', 'Address', 'Phone Number / Email*', and 'Business'. Below these is a search bar with a magnifying glass icon. To the left of the search bar is a vertical red button labeled 'data options'. Below the search bar, there are two rows of input fields for 'Forename' and 'Surname', each with a dropdown arrow and a question mark icon. To the right of these fields are two 'Exact' buttons and a row of filters: 'Init', 'DD', 'MM', 'YYYY', 'Age', 'to', and 'Range'. Below these are two more 'Exact' buttons and another row of filters. Further down are input fields for 'Organisation', 'Building No', 'Building Name', 'Street', 'District', 'Town / County', 'Postcode', and 'Business Descriptor', each with a dropdown arrow. At the bottom left is a 'Clear Form' button. At the bottom right is a large red 'Search' button. On the right side of the interface, there is a 'Recent' section and a 'This session' section, both with a magnifying glass icon. At the very bottom, there is a dropdown menu labeled 'Teleappend / Phone Directory'.

Like us on Facebook - <https://www.facebook.com/ukosint>
Follow us on Twitter - <https://twitter.com/UKOSINT>